



City of Glidden Newsletter

February 2012

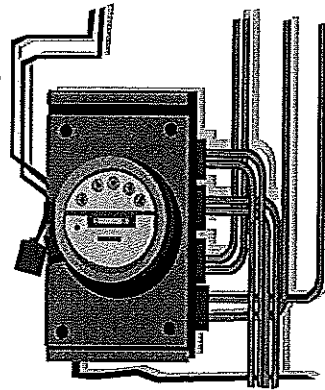
108 Idaho Street

712-659-3010

Is Your Meter Accessible?

Please ensure your meters are accessible for the meter reader. You can help make your meter reader safe by:

- Keeping your **dog restrained** by a leash or chain, caged or secured in another area away from the meter. Utility employees will not step foot on your property if a dog or animal is not clearly restrained.
- Clearing the **snow and ice** from your meters to ensure reliable service and safe operation of your appliances.
- Keeping the path to and around the meter **well/lit and clear** of any obstructions.



If your meter reader is unable to enter your property due to any safety hazards, your meter will not be read and your usage will be estimated.

Holiday Closing

City office, maintenance shop, and library will be closed Monday, February 20th for President's day.



Aquatic Center Easy Pay



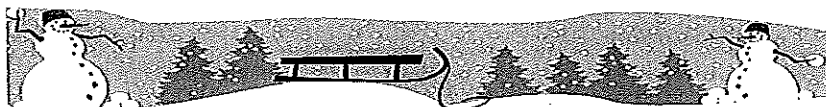
For your convenience, families may purchase a family membership at the Glidden Aquatic Center in four easy payments. Sign up today and make payments of \$35 each by the 20th day of February, March, April, & May! Take advantage of this special offer and save \$10! *ACH available upon request.*

Social Hours

The Glidden community room will be open every Monday & Tuesday from 1-4 pm. Community members may participate in games, playing cards & visit. Coffee & popcorn are provided. Everyone is welcome!

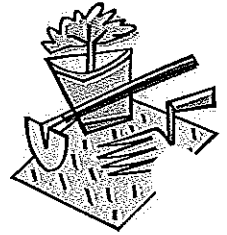
Emergency Shelter

As winter weather approaches, we all need to think about our safety during severe storms and periods of extended electrical outages. If an extended electrical outage occurs, residents can seek shelter at the Community Meeting Room at the City office building. An electric generator will be in operation to keep us all warm and safe. Listen to KCIM/KKRL to know when the shelter will be open.



Glidden Community Gardens

Glidden Community Gardens provide gardens for all Glidden area families and individuals. The gardens are divided into 10 x 20 individual garden plots. A group, family or individual may sign up for one or two garden plots. **There is an annual \$20 fee per plot.** The gardens are located north of the Methodist Church. To sign up for a garden plot complete the form below or contact the City Office at 712-659-3010.



Please fill out the bottom portion and stop in the city office to complete rules and responsibilities form.

Name: _____

Address: _____

Phone (home) _____ (Cell) _____

Email: _____

2012 Glidden Trees Forever/Black Hills Grant Application

The City of Glidden has received a \$1500 grant from the Trees Forever program. The Trees Forever committee would like to offer two programs.

Residential Efficiency Program

Trees planted around homes can lower energy consumption and thereby reduce air conditioning and heating costs.

Trees in Memory

This program provides you a way to honor special people while at the same time helping to plant trees along Northland Park's walking trail! By planting trees, you are providing a lifelong gift for the person or persons remembered and you are contributing to a healthier environment.

The Trees Forever committee will do its best to make available the following species.

	Cost	Size	Description	
___ Autumn Blaze Maple	\$25	8-10'	Height: 50-60 ft	Brilliant reddish orange fall color
___ Greenspire Linden	\$25	8-10'	Height: 40-50 ft	Rapid grower, yellow fall foliage
___ Chanticleer Pear	\$25	7-8'	Height: 30-35 ft	Coned shaped tree, white flowers
___ Identification plaque	\$5.00	(Trees in Memory program limit 20 letters _____)		

All selections will be bare root trees. Applications are due February 20, 2012 at the Glidden City Office. **Limited quantities. Grant match limited to one per customer.** The trees will be awarded on a first come - first serve basis. Payment due at the time of application. Trees available for pick up in early April.

Name _____ Address _____ Phone _____

I understand and agree that if I participate in the Trees Forever program, I will promise to give it excellent care. This includes regular watering, mulch and protection from mowers, etc.

___ Residential Program Signature: _____

___ Trees in Memory Program

OFFICE USE: Application received _____